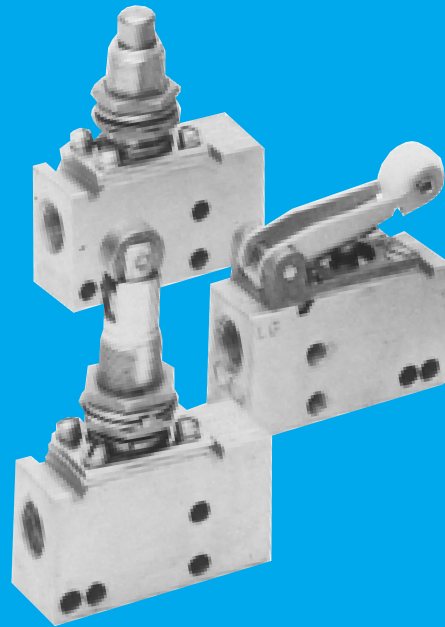


SERIES L-MINI VALVES

# VERSA<sup>®</sup>

BULLETIN  
L-MINI 2001

AIR VALVES FOR INDUSTRY SINCE 1949



## AIR LIMIT SWITCHES Multipurpose 3-port/2-position

One multipurpose 3/2 valve for all 2-Way, 3-Way, NC, NO, Diverter, or Selector functions.

Alodized aluminum body with stainless steel internals.

All ports 1/8" NPT; Internal orifice 9/64" (3.6mm).

Cv = 0.4 (Kv = 5.8); adequate for small cylinders and pilot signals.

Balanced spool construction; force required to actuate is unaffected by the pressure being controlled.

Application pressure: Vacuum to 200 psi (14 bar) pneumatic.

**VERSA<sup>®</sup>**  
www.versa-valves.com *Valves*

Versa Products Company, Inc., 22 Spring Valley Road, Paramus, New Jersey, USA 07652 • 201/843-2400 FAX: 201/843-2931.

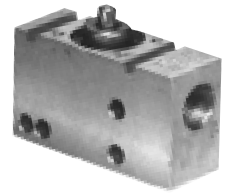
Versa BV., Halstraat 3, 7321 AG Apeldoorn, The Netherlands • +31-55-3660704 FAX: +31-55-3670704

# Series L-Mini

Versa exercises diligence to assure that information contained in this catalog is correct, but does not accept responsibility for any errors or omissions. Versa also reserves the right to change or delete data or products at any time without prior notification. To be sure the data you require is correct, consult factory.

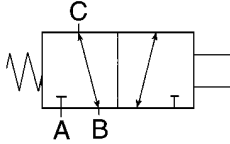
The versatile design of the L-Mini valve allows it to directly replace electrical limit switches, enabling you to make your system 100% air controlled. The valve is able to endure harsh, dirty, humid environments that would destroy electrical switches. Also the hazard of fire or explosion and the need for bulky conduit and enclosures is eliminated.

The Basic Valve, as shown at right, can be applied; or a Basic Valve with one of the many different actuating devices shown below may also be utilized in order to provide the precise actuation method desired.



## FLOW DIAGRAM

5 Micron Filtration Recommended  
No Lubrication Required



The "L-Mini" valve is a 3-ported, 2-position, multipurpose valve with closed crossover.

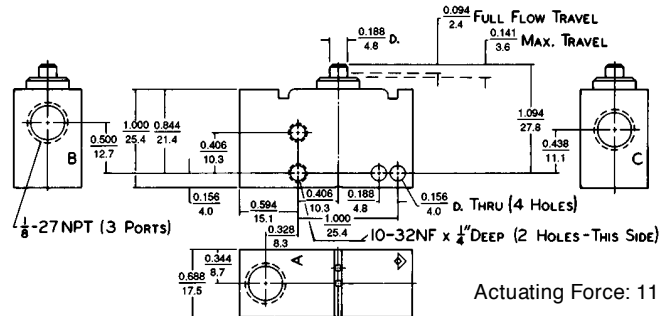
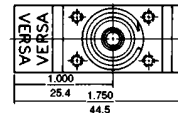
The table below lists all the possible valve functions which can be obtained by just changing the way the valve is connected.

Port	2-Way N.O.	2-Way N.C.	3-Way N.O.	3-Way N.C.	Diverter	Selector
A	Plug	Inlet	Exhaust	Inlet	Outlet	Inlet
B	Inlet	Plug	Inlet	Exhaust	Outlet	Inlet
C	Outlet	Outlet	Outlet	Outlet	Inlet	Outlet

## BASIC VALVE

LSN-3200

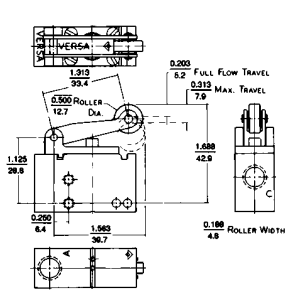
Dimensions shown in inches mm



### Suffix Options Available:

- LSS: Recommended option when actuating forces will be more than 3½ times the amount shown
- 155: Viton Static Seals (for certain chemical resistance)

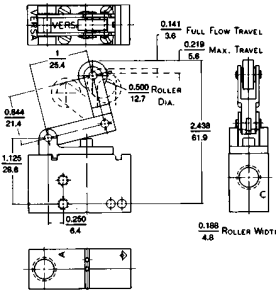
### ROLLER LEVER



Actuating Force: 6 oz.(170 g)

LSC-3200-LL41

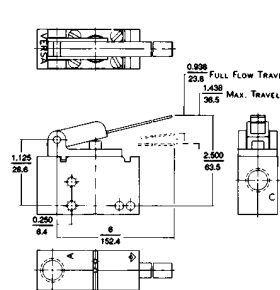
### ONE-WAY ROLLER LEVER



Actuating Force: 7 oz.(200 g)

LSC-3200-LL42

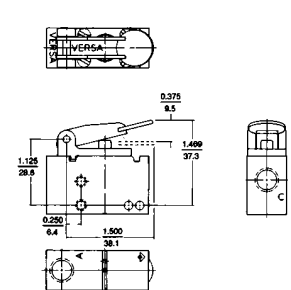
### 6" (152 mm) LEVER



Actuating Force: 2 oz.(60 g)

LSC-3200-LL43

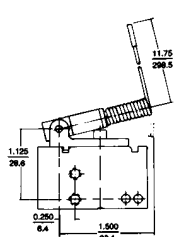
### FINGERTIP LEVER



Actuating Force: 7 oz.(200 g)

LSH-3200-LL44

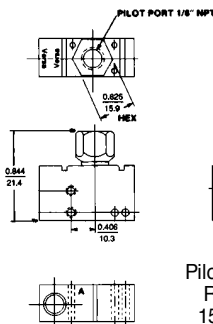
### WAND



Actuating Force: 1 oz.(30 g)

LSL-3200-LL45

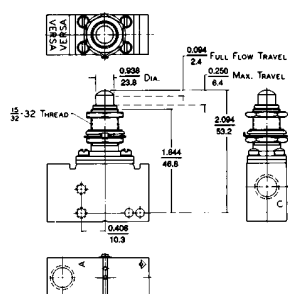
### PILOT



Pilot Pressure Required:  
15-200 psi.  
(1-14 bar)

LSP-3200

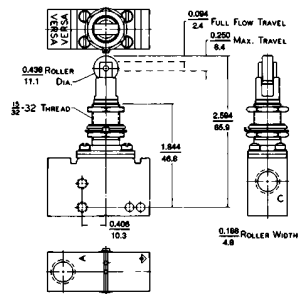
### PANEL BUTTON



Actuating Force: 2 lb.13 oz.(1.28 kg)

LSC-3200-LP1

### PANEL ROLLER



Actuating Force: 2 lb.13 oz.(1.28 kg)

LSC-3200-LP2 (Shown)  
LSC-3200-LP3 (Roller Axis  
90° to Above)