



ABB Robotics, April 2015

FlexFeeder Overview

FlexFeeder Agenda

- DVP
- Overview
- Working Principle
- Key Features
- Key Data
- Communication
- Scope of Supply
- Graphical User Interface (GUI)
- Operation Panel
- Competition Analysis
- Customer Value

Overview

Differentiated value proposition



Together with ABB Integrated Vision, FlexFeeder is the most versatile feeding module for unsorted components in a production automation environment.

Target growth market

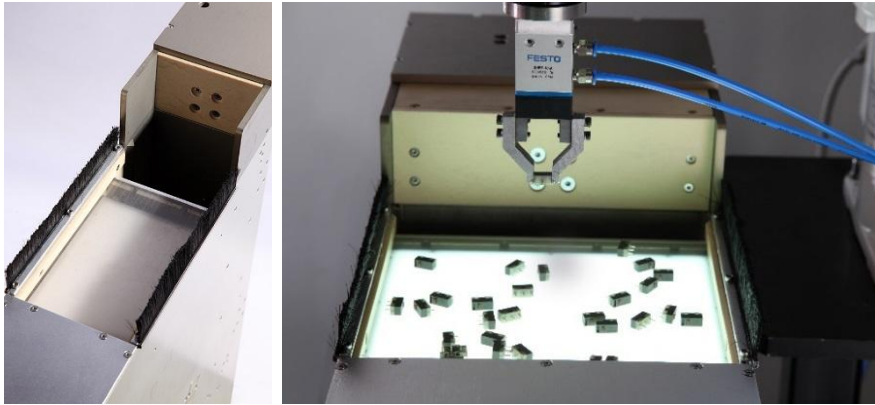
Small parts assembly



- Market demand for sorting a wide variety of small parts, especially in 3C industry
- Aim to provide a method for generic parts feeding with compactness at a competitive price

FlexFeeder

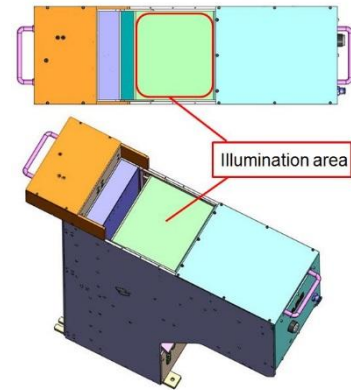
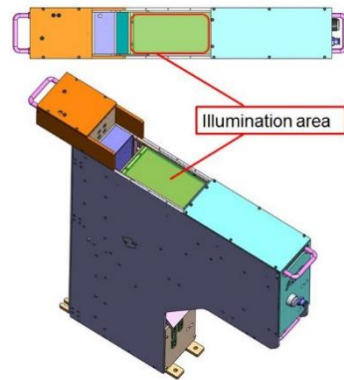
Key features



- Flexibility in feeding small parts of various size, shape and material
- Small gap design to ensure reliable running
- Adjustable feeding amount
- Quick parts unload and changeover
- Easy to lift with handles
- Empty detection

Available In two versions

Key data



Specification	Single	Double
Weight	27 kg	40 kg
Dimension	754x737x125 mm	754x737x230 mm
Illumination area dimension	90x160 mm	200x160 mm
Air pressure (bar)	4-6 bar	4-6 bar

FlexFeeder Communication

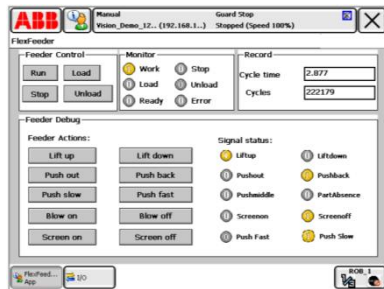
Robot option 617-1
FlexPendant
Interface
623-1 Multitasking
616-1 PC Interface



- Work seamlessly with ABB integrated vision
- Support three communication protocols
 - EtherNet/IP
 - DeviceNet
 - Discrete I/O
- Plug & play while IRC5 compact controller configuring with required software option

FlexFeeder

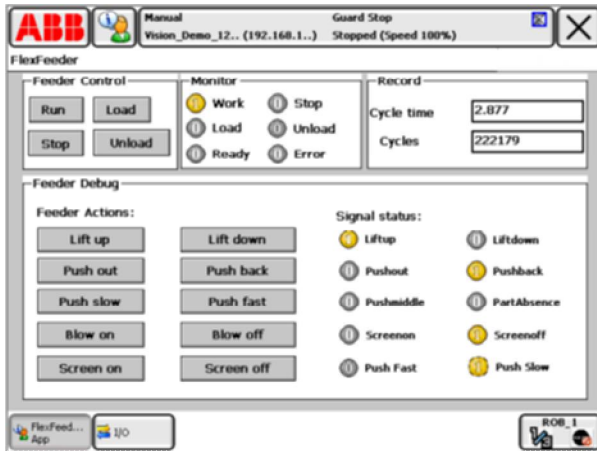
Scope of supply



- FlexFeeder-Single
- FlexFeeder-Double
- Backlight (option)
- DeviceNet, EtherNet/IP, Discrete I/O
- Graphical User Interface
- Product and User manual



FlexFeeder Scope of Supply Graphical User Interface (GUI)



Easy operation

- Run, Stop
- Load, Unload
- One click for cylinder action test

Programming

- EIO automatically configure
- RAPID module pre-setting

Production

- Monitor of signals and production status
- Cycle and cycle time record

FlexFeeder Operation panel

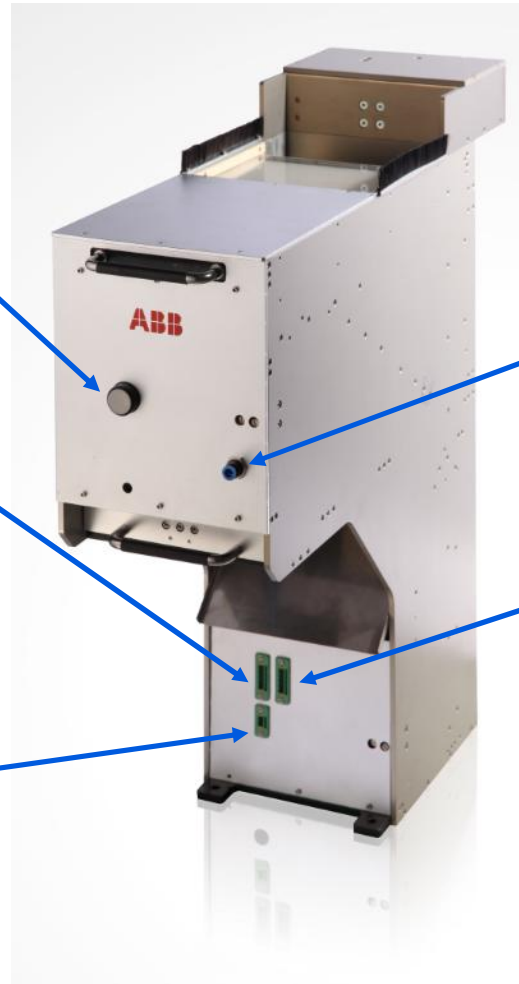
Power Switch

DeviceNet
Connector

24V Power
Supply

Air Supply Inlet

EtherNet I/P
Connector



FlexFeeder

Key customer values



- Flexibility in feeding small parts of various size, shape and material
- Easy to integrate, easy to use
- Compact footprint
- Quick parts changeover
- Short cycle time
- Improve productivity and cost saving
- Two versions to be chosen

Power and productivity
for a better world™

